

# Your Community Connection

Vol. 1, 2019

## News from Waste Management's Eagle Valley Recycle and Disposal Facility (RDF)

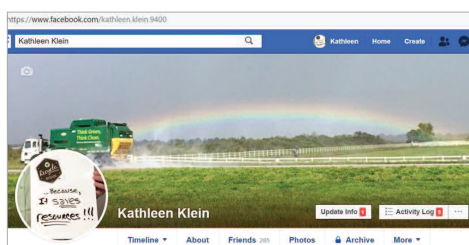
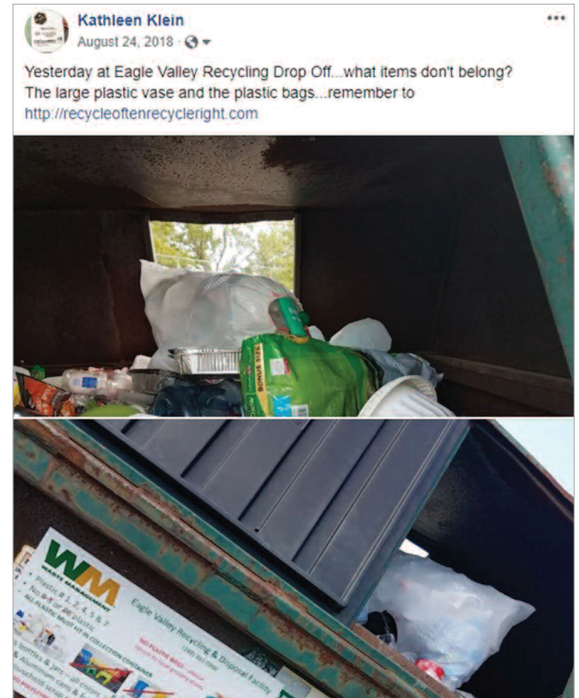
### Eagle Valley Recycling Drop-off Area – On-going Contamination Concerns

If you follow Waste Management on our local Facebook page you have likely seen postings of photos taken at the Eagle Valley Recycling Drop-off area showing the on-going contamination concerns. Signs in the area clearly state what is and is NOT acceptable, however individuals using the drop-off continue to ignore the signage. It is hard to understand why this is occurring, but important to continue to message about.

Anything that is not listed as acceptable should not go in a recycling bin, at home or at Eagle Valley's Recycling Drop-off. Please be sure to follow proper recycling guidelines, guidelines serve a purpose, they tell what can and what should not go in the recycle bin. Anything that doesn't belong in the bin is contamination and travels all the way to a Material Recovery Facility (recycling facility) and then has to travel all the way back to a landfill. This adds cost and creates operational inefficiencies around recycling, not to mention the over-the-road emissions (green house gases) in transporting the material back and forth.

Please follow guidelines and don't be a "wishcycler". "Wishcyclers" are individuals who place items in the recycle bin for several reasons, because they feel guilty throwing them in the landfill, they aren't quite sure if the item is NOT recyclable, or they "wish"/feel the item "should be" recycled/recyclable – "wishcycling". If you feel troubled about throwing things away, find ways to "reduce" and "reuse" when possible – but please don't "wishcycle", it creates contamination and hurts the recycling effort.

Follow us on facebook and twitter for local news and information. Learn more about proper recycling at <https://recycleoftenrecycleright.com/>



<https://www.facebook.com/kathleen.klein.9400>



<https://twitter.com/kathyklein4>



#### RECYCLE OFTEN BUT RECYCLE RIGHT!

- NO PLASTIC BAGS, Ribbon, Hangers or other TANGLERS
- NO Wire – Eagle Valley has a scrap metal container for this wire
- ONLY plastic food containers with the recycle symbol  NO OTHER SCRAP PLASTIC.
- NO Cardboard or grayboard mixed in with comingled plastic, metal & glass containers.

### Eagle Valley Recycling and Disposal Facility

600 W. Silver Bell Road  
Orion, MI 48359

**Telephone**  
248-391-0990  
**Fax**  
248-391-1219

**Please call for current hours of operation as hours may change seasonally.**  
Monday – Friday 7 a.m. – 4 p.m.; Saturday 8 a.m. – 11:30 a.m.  
**Recycling Hours**  
Recycling drop-off available during normal landfill hours.  
**For tours call (248) 391-0990.**

**LANDFILL CONCERNS HOTLINE**  
1-877-360-8582  
**WM CUSTOMER SERVICE**  
1-866-797-9018  
Please keep these numbers handy.



<http://eaglevalleylandfill.wm.com>

 Printed on recycled-content paper.

**THINK GREEN®**

## Waste Management participates in Oakland County's MI Career Quest Southwest

On November 28th, businesses throughout a six county area – Oakland, Macomb, Wayne, Livingston, Washtenaw and Monroe – came together to showcase careers in their various trades. Over 7,000 students and chaperones attended the event hosted by Oakland County and Michigan Works. Students were able to learn of the many good-paying, in-demand, skilled trades employment opportunities available to them in construction, advanced manufacturing, health sciences and information technology. Students lined up to sit in a new Waste Management CNG truck. The truck runs on compressed natural gas and utilizes on-board computing (information technology/logistics) to navigate its routes. Waste collection is all about using information technology/logistics to encourage safety and efficiency in collecting waste and recycling to keep communities clean.

Students also received safety education about the “three points of contact” for entering and exiting the vehicle. Waste Management adheres to strict health and safety standards to ensure our employees operate safely in our communities and make it home healthy to their families at the end of the day.

Explore careers at Waste Management at <https://careers.wm.com/us/en/>

Learn more about MICareerQuest Southeast at <https://www.OakGov.com/MiCareerQuestSE>.

Next years event will be November 8th, 2019 at Novi's Suburban Collection Showplace.



Eagle Valley Recycling and Disposal Facility  
600 W. Silver Bell Road  
Orion, MI 48359

**THINK GREEN.®**  
[wm.com](http://wm.com)

## 2018 Waste Management Sustainability Report & 2019 Sustainability Forum

Waste Management is the nation's largest environmental services provider, handling more recyclables in North America than anyone in our industry. If you are interested in learning more about what is happening nationally and globally around waste and recycling, this report provides great insight into exciting innovations and global market trends that impact all of us. The report is long (211 pages) but there are brief sections that cover innovative technologies and organics/food waste management. It also includes updates on Waste Management's progress towards our corporate sustainability goals.

To view the report visit <http://sustainability.wm.com/downloads/report.php>

On January 31, 2019 Waste Management hosted the 2019 Sustainability Forum. Much of the conversation was about plastics in the environment. Viewing information can be found at <https://www.greenbiz.com/event/2019/01/31/2019-waste-management-sustainability-forum-big-ideas-bold-action-better-world>

